

Keep your heavy-duty equipment operating with Deka Commercial Batteries.

Keep Heavy-Duty Equipment Running at Top Performance

Demanding commercial equipment requires nothing less than the most powerful, reliable batteries. This complete line of the toughest commercial product is specially engineered for durability while meeting high power ratings for heavy-duty engines.



Key Features and Benefits of the Deka Commercial Line

- Genuine calcium lead alloy provides longer waterless operation and extended battery life.
- Anchor-locked elements with full-frame grids and tight-packed commercial plates resist the damaging effects of vibration, delivering more power-per-pound than other batteries.
- Most of our commercial batteries contain premium "deep pocket" envelope separators, which protect the plates on all four sides to dramatically reduce shorting and extend service life.
- Special computer-aided design and manufacturing means more durability for heavy-duty line-haul trucks, buses, farm tractors and off-road equipment.

- Deka Commercial Batteries are available wet and some can be ordered bone-dry. Our special dry-charge process completely eliminates moisture for virtually unlimited shelf life when compared to inferior "moist-dry" types.
- Most popular sizes feature tough polypropylene cases which resist breakage and extend service life. Many are also available with handles and special terminals for easy installation.
- Deka offers the most complete line of enveloped calcium maintenance-free commercial batteries in the industry. Our line includes such hard-to-find group sizes as 5D.
- More than 250 quality control checks ensure the highest quality.

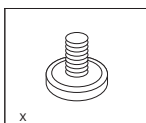
Commercial Batteries

GROUP NO.	PART NO.	PERFORMANCE LEVEL			WEIGHT (LB.)	MAXIMUM OVERALL DIMENSIONS						CORE VALUE	FOOTNOTES
		CCA	RC	REF. CA		LENGTH		WIDTH		HEIGHT			
						in	mm	in	mm	in	mm		
8-VOLT COMMERCIAL SERVICE													
1	801	520	102	640	32	8-7/8	225	6-3/4	171	8-7/8	225	1.0	12,25
6-VOLT HEAVY-DUTY COMMERCIAL SERVICE													
1	901MF	640	130	785	33	9	229	6-7/8	175	8-3/4	222	1.0	21,25
2	902	675	185	830	37	10-3/8	264	6-7/8	175	8-3/4	222	1.0	12,25
3EH	93EH	875	250	1075	47	19-1/4	489	4-1/4	108	10	254	1.0	12,25
4	904MF	975	250	1200	48	12-1/2	318	6-7/8	175	9-1/2	241	1.5	21,25
5D	905D	880	250	1080	50	13-3/8	340	7-1/8	181	9-1/4	235	1.5	12,25
12-VOLT HEAVY-DUTY COMMERCIAL SERVICE													
3ET	93ET	500	120	615	49.5	19-1/4	489	4-1/4	108	9-7/8	251	1.0	12,25
4D	904D	1050	290	1290	97	20-3/4	527	8-1/2	216	10-1/8	258	3.0	12,17,21,22
4DLT	94DLT	850	240	1045	78.5	20	508	8-1/8	206	8-1/8	206	2.0	12,19,25
8D	908DFT	1425	440	1755	127	20-3/4	527	11	279	10	25	4.0	12,17,21,22
	908D	1400	430	1720	130							4.0	12,17,25
	708D	1100	325	1355	114.5							4.0	12,17,25
17TF	917TF	530	140	650	63	17	432	6-7/8	175	8	203	1.5	11,15,19,25
28	928MF	550	100	675	42.5	10-1/4	260	6-3/4	171	9-1/2	241	1.0	21,22,X
30H	930H	650	150	800	51	13	330	6-3/4	171	9-1/2	241	1.5	19,21,22
31	1231MF	1000	185	1230	60	13	330	6-3/4	171	9-1/2	241	1.5	17,19,21,22,X
	1131MF	950	175	1170	56.5							1.5	17,19,21,22,X
	1031MF	760	170	935	53.5							1.5	17,19,21,22,X
	931MF	650	150	800	52							1.5	17,19,21,22,X
31P	1231PMF	1000	185	1230	60	13	330	6-3/4	171	9-1/2	241	1.5	17,19,21,22
	1131PMF	950	175	1170	56.5							1.5	17,19,21,22
	1031PMF	760	170	935	53.5							1.5	17,19,21,22
	931PMF	650	150	800	52							1.5	17,19,21,22
12-VOLT HEAVY-DUTY COMMERCIAL SEVERE SERVICE/DUAL PURPOSE													
31	7T31	730	190	900	62	13	330	6-3/4	171	9-1/2	241	1.5	17,19,21,22,X
31P	7T31P	730	190	900	62							1.5	17,19,21,22
31	DP31CS	700	185	860	57							1.5	17,19,21,22,X
12-VOLT DRY CHARGED - HEAVY-DUTY COMMERCIAL SERVICE (Acid Sold Separately)													
8D	908DY	1400	430	1720	80	20-3/4	527	11	279	10	254	4.0	12,17,23,25
31	1231MFD	1000	185	1230	43	13	330	6-3/4	171	9-1/2	241	1.5	17,19,21,22,23,X

- Batteries are maintenance-free calcium grids, except where noted
- Batteries manufactured in polypropylene cases & covers, except where noted
- Batteries manufactured in black cases & covers
- Terminal s are SAE Posts, unless noted
- Weights are approximates
- CA @ 32°F are approximations and for comparison only
- CCA and RC ratings conform to B.C.I. specifications

FOOTNOTES:

- X - 3/8" x 16 stainless steel stud posts
- 11 - Low maintenance - Low antimony grids
- 12 - Hybrid construction
- 15 - Hard rubber, one-piece cover construction
- 17 - Includes handle
- 19 - Includes lifting ledges
- 21 - Anchor lock elements
- 22 - Flush manifold vented cover
- 23 - Up to 10% reduced capacity
- 25 - With individual vent caps



PROPOSITION 65 WARNING: Battery posts, terminals and related accessories contain lead and lead compounds, chemicals known to the State of California to cause cancer and reproductive harm. Batteries also contain other chemicals known to the State of California to cause cancer. **WASH HANDS AFTER HANDLING.**

MEMBER:



Deka®

DOMINATOR®

GEL MARINE / RV BATTERIES



Dominator gel batteries offer many significant advantages over conventional liquid acid batteries. Because there is no liquid electrolyte to leak or spill out of the battery, the *Dominator* can easily be installed in hard-to-reach locations. There is no need to check fluid levels. The *Dominator's* gelled construction also prevents vibration damage to plates. The Dominator even works under water!



THE DEEPEST OF DEEP CYCLE SERVICE!

- Longer Deep Cycle Life
- More Operating/Trolling Time
- Faster Recharge/Longer Life
- Ideal for Remote Locations



QUALITY SYSTEM
CERTIFIED
ISO 9001
ISO/TS 16949
ENVIRONMENTAL
SYSTEM CERTIFIED
ISO 14001



NON-SPILLABLE by DOT (Department of Transportation), ICAO (International Commercial Airline Organization) and IATA (International Airline Transport Association) definitions.*

The Dominator vs. Conventional Liquid Acid Batteries

Deka introduces a marine battery second to none. The Dominator contains electrolyte that is permanently locked in a thixotropic gel, instead of conventional and messy liquid acid. Our gelled electrolyte batteries offer many significant advantages over conventional liquid acid batteries. Because there is no liquid electrolyte to leak or spill out of the battery, the Dominator can be easily installed in hard-to-reach locations. Because it has gelled electrolyte, there is no need to check fluid levels. The Dominator's gelled construction also prevents vibration damage to plates. The Dominator even works under water.

Potential Applications for the Deka Dominator Marine Battery

Buoy Lighting	Engine Starting	Safety Lighting
Communication Equipment	House Power	Security Systems
Control Equipment	Marine Equipment	Ships' Batteries
Emergency Lighting	Navigation Beacons	Trolling Motors
Emergency Power	Radar Stations	Other Deep-Discharge Applications
Supply Systems	Radio Relay Stations	

FEATURE

BENEFIT

100% maintenance-free

No need to check electrolyte levels

Easy to install

Convenient for hard-to-reach connection and hook-up

Non-spillable by ICAO (International Commercial Airline Organization), IATA (International Airline Transport Association), and DOT (Department of Transportation) definitions*

Transports easily by air without special containers

Recombinant construction with gelled electrolyte

Virtually eliminates dangerous spills, gasses and terminal corrosion

Power-Perform® full-frame plates and specially formulated oxide

For maximum durability, power and life

Thick consistency of gelled electrolyte and tight-pack construction

Prevents the damaging effects of vibration

Self-discharge rate of less than 2% per month (at 77°F)

Recharges even if left discharged for months

Over 250 quality control checks

Guarantees highest quality, performance and reliability

Made in U.S.A.

Your assurance of quality

THE DOMINATOR DIFFERENCE

- Longer running time and life than comparable wet cell batteries.
- No watering needed - totally maintenance-free.
- Spillproof - prevents acid spills and terminal corrosion.
- Safe, convenient operation - gassing and sulfating are virtually eliminated.
- Flexibility - can be installed in any position (*upside-down not recommended*).
- Superior resistance to vibration damage.

Group No.	Type No.	Footnotes	Volts	Minutes Discharged at						Ampere Hour Capacity						Approx. Weight		Dimensions		
				75	50	25	15	8	5	100 Hr.	20 Hr.	6 Hr.	5 Hr.	3 Hr.	1 Hr.			L	W	H
				Amps	Amps	Amps	Amps	Amps	Amps	Rate	Rate	Rate	Rate	Rate	Rate	Lbs. Kgs.	In. mm	In. mm	In. mm	
U1	8GU1	4,38,39,44,Y	12	5	12	47	90	190	325	36.0	31.6	28.0	26.8	25.5	21.0	23.5 (10.7)	7 3/8 (197)	5 1/2 (130)	7 1/4 (184)	
	8GU1H	4,17,38,39,44,Y	12	5	12	47	90	190	325	36.0	31.6	28.0	26.8	25.5	21.0	23.5 (10.7)	8 1/8 (211)	5 1/2 (130)	7 1/4 (184)	
22NF	8G22NF	4,38,39,44,G	12	13	27	82	157	250	557	58.0	51.0	43.6	43.2	39.9	31.8	37.5 (17.1)	9 (228)	5 1/2 (140)	9 1/4 (235)	
	8G40C	4,38,39,44,C	12	11	21	63	120	250	430	48.0	40.0	35.0	34.0	31.9	25.8	31.5 (14.3)	7 3/8 (197)	6 3/8 (168)	6 3/8 (175)	
24M	8G24M	4,17,38,39,44,U	12	35	57	140	245	500	845	84.5	73.6	64.5	63.0	59.3	48.5	51.5 (23.4)	10 3/4 (276)	6 3/8 (171)	9 3/4 (238)	
24	8G24	4,17,38,39,44,G	12	33	57	140	245	500	845	84.5	73.6	64.5	63.0	59.3	48.5	51.5 (23.4)	10 3/4 (276)	6 3/8 (171)	9 3/4 (238)	
	8G24NH	4,38,39,44,G	12	33	57	140	245	500	845	84.5	73.6	64.5	63.0	59.3	48.5	51.5 (23.4)	10 3/4 (260)	6 3/8 (171)	9 3/4 (238)	
	8G24SS	4,38,39,44,C	12	33	57	140	245	500	845	84.5	73.6	64.5	63.0	59.3	48.5	51.5 (23.4)	10 3/4 (260)	6 3/8 (171)	8 3/4 (210)	
27M	8G27M	4,17,38,39,44,U	12	40	70	170	300	605	1000	99.0	88.0	76.0	72.0	69.9	57.0	62 (28.1)	12 1/2 (324)	6 3/8 (171)	9 3/4 (238)	
	8G27	4,17,38,39,44,G	12	40	70	170	300	605	1000	99.0	88.0	76.0	72.0	69.9	57.0	62 (28.1)	12 1/2 (324)	6 3/8 (171)	9 3/4 (238)	
27	8G27/T876	4,17,38,39,44,B	12	40	70	170	300	605	1000	99.0	88.0	76.0	72.0	69.9	57.0	62 (28.1)	12 1/2 (324)	6 3/8 (171)	9 3/4 (235)	
30H	8G30H	4,17,38,39,44,B	12	51	84	190	335	690	1160	108.0	97.6	85.2	80.5	78.6	64.5	68.5 (31.1)	12 3/4 (329)	6 3/8 (171)	9 3/4 (248)	
31M	8G31DTM	4,16,17,38,39,44,A	12	51	84	190	335	690	1160	108.0	97.6	85.2	80.5	78.6	64.5	68.5 (31.1)	12 3/4 (329)	6 3/8 (171)	9 3/4 (238)	
31	8G31	4,17,38,39,44,X	12	51	84	190	335	690	1160	108.0	97.6	85.2	80.5	78.6	64.5	68.5 (31.1)	12 3/4 (329)	6 3/8 (171)	9 3/4 (238)	
34R	8G34R	4,38,39,44,C	12	21	39	96	172	368	640	70.0	60.0	48.9	47.5	43.5	36.0	38.5 (17.5)	10 3/8 (259)	6 3/8 (171)	7 (178)	
4D	8G4D	4,17,44	12	105	175	395	685	1385	2300	210.0	183.0	160.0	153.0	148.0	122.0	127.5 (57.9)	20 3/4 (527)	8 3/8 (216)	10 (254)	
8D	8G8D	4,17,44	12	135	220	500	890	1750	3000	265.0	225.0	198.0	188.0	182.0	150.0	157 (71.2)	20 3/4 (527)	11 (279)	10 (254)	
GC2	8GGC2	4,38,39,44,U	6	92	155	375	680	1360	2200	198.0	180.0	155.0	147.0	136.0	99.0	69 (31.3)	10 3/4 (260)	7 3/8 (181)	10 3/8 (276)	
GC8	8G8VGC	4,44,U	8	75	120	270	500	1040	1800	160.0	140.0	117.0	114.0	107.0	90.5	70 (31.5)	10 3/4 (260)	7 3/8 (181)	10 3/8 (276)	
5SHP	8G5SHP	4,17,44	12	53	90	218	406	835	1370	123.0	115.0	99.7	96.8	87.7	68.9	84.5 (38.3)	13 3/8 (345)	6 3/8 (172)	11 (280)	
	8G5SHP876	4,17,44,B	12	53	90	218	406	835	1370	123.0	115.0	99.7	96.8	87.7	68.9	84.5 (38.3)	13 3/8 (345)	6 3/8 (172)	11 1/8 (290)	

ALL RATINGS ARE AFTER 15 CYCLES AND CONFORM TO B.C.I. SPECIFICATIONS.

All batteries manufactured in polypropylene cases and covers.

IMPORTANT CHARGING INSTRUCTIONS: WARRANTY VOID IF OPENED OR IMPROPERLY CHARGED. Do not install in a sealed container. Constant under or overcharging will damage any battery and shorten its life! Use a voltage-regulated charger. For 12-volt batteries, charge to at least 13.8 volts but no more than 14.6 volts at 77°F (25°C). For 8-volt batteries, charge to at least 9.2 volts but no more than 9.7 volts at 77°F (25°C). For 6-volt batteries, charge to at least 6.9 volts but no more than 7.3 volts at 77°F (25°C). The open circuit voltage of a fully charged 12-volt battery is 12.8V at 77°F (25°C). However, as the battery charges, the building internal pressure (voltage) causes resistance to the charge. Therefore, the on-charge voltage must be higher (at least 13.8V) to overcome this internal pressure (voltage) during charging.

PROPOSITION 65 WARNING: Battery posts, terminals and related accessories contain lead and lead compounds, chemicals known to the State of California to cause cancer and reproductive harm. Batteries also contain other chemicals known to the State of California to cause cancer. **WASH HANDS AFTER HANDLING.**

FOOTNOTES:

- 4 - Gray cover / Gray case
- 16 - Dual Terminal Universal Design
- 17 - Includes handle
- 38 - "Non-spillable" defined by DOT (Department of Transportation) definitions
- 39 - "Non Spillable" defined by ICAO (International Civil Aviation Organization) and IATA (International Air Transport Association) definitions
- 44 - Free replacement warranty is 3 months in full electric vehicle use
 - A - Flush combination terminal w/ 5/16" stud and SAE post, hex nuts included
 - B - Flag terminal w/ 3/8" diameter hole (T876)
 - C - 1/4" x 20 copper insert terminal
 - G - Offset post w/ horizontal hole, stainless steel 5/16" bolt and hex nut (T881)
 - U - SAE post and vertical 5/16" NEG/POS stainless steel studs and hex nuts
 - X - 3/8" x 16 stainless steel stud posts
 - Y - Small L terminal with round holes
- * 8VGC, 4D, 8D, 5SHP currently not classified as non-spillable



East Penn Manufacturing Co. Lyon Station, PA 19536-0147 Phone: 610-682-6361 Fax: 610-682-4781 www.dekabatteries.com

Form No. 0909 08/18

© 2018 by EPM Printed in U.S.A.

All data subject to change without notice. No part of this document may be copied or reproduced, electronically or mechanically, without written permission from the company.



Deep Cycle Power – for demanding applications.



GC12T



426G



GC15

Key Features and Benefits of the Deka Pro Master Battery

- Power for a wide variety of applications, including personnel carrier, aerial lift, electric vehicle, golf car, boat, RV, floor scrubber, road sign, or any other application that requires deep cycle power.
 - Innovative heavy-duty grids, plates with higher density oxide, and improved glass mat envelope separators.
 - Longer life cycles and superior cycle life performance.
 - Extremely durable polypropylene case.
 - User friendly twist-and-release vent caps.
 - Convenient lifting handle.
- With more than 300 quality control checks, Pro Master is a battery you will rely on.



PRO MASTER Batteries

FEATURES	BENEFITS
• High density oxide paste...	• Produces more energy per pound.
• Integrated "twist-and-release" vent cap "quick fill" system...	• Releases vent caps in single motion design, making maintenance a easier.
• Ergonomic lift handles...	• Reduce the risk of slippage. Designed for easier installation.
• Heavier grids and plates...	• Provide longer cycle life, better added value.
• Thicker plate straps...	• Lowers resistance, delivers better performance, longer life.
• Heavy-duty, bulge-resistant material...	• Stabilizes and protects the groups with polypropylene casing. Resists bulging.
• Through-partition connectors...	• Decrease internal resistance, increasing power.
• Computer-controlled production...	• Assures that grid casting, plate pasting, curing, and formation meet rigid quality specifications.
• Glass mat, dual-insulation, "deep pocket" envelope separators...	• Protect plates and locks active material to the grid to retard shedding and prevent shorts. Glass fibers strengthen plate.
• Dual terminals...	• Virtually fit almost any application.
• Over 300 quality control checks...	• Assure the highest quality.

PART NO.	20 AH CAPACITY	5 AH CAPACITY	MINS. DISCHARGED			WEIGHT lbs. (kgs.)	LENGTH		WIDTH		HEIGHT		Core Value	WARRANTY FREE MO.	FOOTNOTES
			@ 75 AMPS	@ 56 AMPS	@ 25 AMPS		WET	mm	in	mm	in	mm			
GOLF CAR — EV — MOTIVE POWER — DEEP CYCLE SERVICE															
GC25	235	188	132	—	488	68	10%	260	7½	181	10%	276	1.5	12	4,11,36,U
GC15	230	174	120	—	448	64	10%	260	7½	181	10%	276	1.5	12	4,11,36,U
GC10	215	157	105	—	395	60.5	10%	260	7½	181	10%	276	1.5	12	11,36,U
GC45	255	203	145	—	530	77	10%	260	7½	181	11%	302	1.5	12	4,11,36,U
GC8V	165	130	85	121	318	68	10%	260	7½	181	11%	283	1.5	12	4,11,36,U
GC12T	155	122	77	110	292	86	13%	333	7⅛	179	11%	289	1.5	12	11,17,N
12-VOLT GOLF CAR STARTING															
PART NO.	CCA	R.C.	REF. CA	WEIGHT lbs. (kgs.)	LENGTH		WIDTH		HEIGHT		Core Value	WARRANTY FREE MO.	FOOTNOTES		
					WET	mm	in	mm	in	mm				in	
GCSTRAP Golf Car Strap Handle when ordered individually. One strap shipped per full pallet of 6-volt and 8-volt golf car batteries.															
For gas engine golf cars with T881 terminal:															
426G	450	55	555	27.5	8%	222	6%	171	8	203	1.0	12	17,22,G		

All above types have microporous polyethylene envelope separators with glass mat (except 426G).

426G has microporous, polyethylene envelope separators.

All batteries manufactured in polypropylene cases.

All ratings conform to B.C.I. specifications.

FOOTNOTES:

Unless otherwise noted all batteries are:
Black Cover/Black Case

4. Gray cover / Gray case

11. Low maintenance-low antimony grids

17. Includes handle

22. Flush manifold vented cover

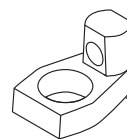
36. Peak performance capacity

G. Offset post w/ horizontal hole, stainless steel 5/16" bolt and hex nut (T881)

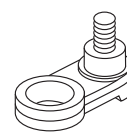
N. Vertical stainless steel 5/16"- 18 stud (THPT)

U. Molded-in offset SAE post and vertical 5/16" NEG., 5/16" POS. stainless steel studs & hex nuts

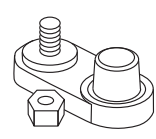
TERMINAL SELECTIONS



G
with 5/16" Stainless Steel Nut and Bolt



N
with Vertical Stainless Steel 5/16"- 18 stud



U
with 5/16" Stainless Steel Studs and Hex Nuts

PROPOSITION 65 WARNING: Battery posts, terminals and related accessories contain lead and lead compounds, chemicals known to the State of California to cause cancer and reproductive harm. Batteries also contain other chemicals known to the State of California to cause cancer. **WASH HANDS AFTER HANDLING.**



www.dekabatteries.com



East Penn Manufacturing Co. Lyon Station, PA 19536-0147 Phone: 610-682-6361 Fax: 610-682-4781 Order Department Hotline: 610-682-4231