

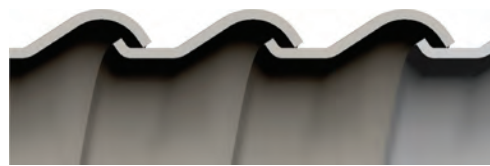
# Type RWS

Flexible Steel Conduit  
UL Listed Flexible Metal Conduit (FMC)



## Construction

- Constructed of continuously interlocked, zinc-coated steel strip.
- Flexible with high crush resistance.
- Smooth exterior and interior allow for easy pulling and wire fishing.



Angle-Lock Design 3/8" through 4"

## Installation

- Uses standard flexible metal conduit fittings giving an IP40 rating.
- Continuous grounding contact.
- UL Listed Standard #1, File # E98045.
- Manufactured in size range from 3/8" through 4".
- Complies with Article 348, NEC.
- NEMA 1 Enclosure.
- Permitted to be used in exposed and concealed locations (Article 348.10); enclosed motor leads (Article 430.245(B)); elevators, escalators, wheelchair lifts (Article 620.21). Not for wet locations.
- +450° F Maximum temperature.

## NEC Articles

- Article 250.102, 250.118(5) and 250.134(B) Equipment Grounding.
- Article 300.22 (D) Information Technology Equipment
- Article 348 Flexible Metal Conduit. (FMC)
- Article 501.30 (B) Class I Div. 2.
- Article 620.21 Elevator Wiring Methods
- Article 645.5 (E) (2) Under Raised Floors

• UL LISTED  • RoHS WEEE COMPLIANT

## Type RWS

Flexible steel conduit



## Product Specifications

## Ordering Information

Electrical Trade Size		Inside Diameter		Outside Diameter		Approx Inside Bend Radius	Approx Weight lbs.	Standard Coils		Standard Reels		Additional Packaging	
Inches	mm	Inches		Inches				PER	Length	NAED	Length	NAED	Length
		MIN.	MAX.	MIN.	MAX.	Inches	100 FT.	Feet	PIN	Feet	PIN	Feet	PIN
3/8	12	.375 – .393		.560 – .610		2	18	100	455503	1000	455507	250	455504
1/2	16	.625 – .645		.860 – .920		3	28	100	455513	1000	455517	500	455516
3/4	21	.812 – .835		1.045 – 1.105		4	33	100	455523	500	455526	1000	455527
1	27	1.000 – 1.040		1.300 – 1.380		5	51	50	455532	300	455533		
1-1/4	35	1.250 – 1.300		1.550 – 1.630		6-1/4	63	50	455542	200	455543		
1-1/2	41	1.500 – 1.575		1.850 – 1.950		7-1/2	76	25	455551	150	455553		
2	53	2.000 – 2.080		2.350 – 2.450		10	100	25	455561	100	455563		
2-1/2	63	2.500 –		2.860 – 3.060		12-1/2	165	25	455571				
3	78	3.000 –		3.360 – 3.560		15	197	25	455581				
3-1/2	91	3.500 –		3.860 – 4.060		17-1/2	230	25	455601				
4	103	4.000 –		4.360 – 4.560		20	263	25	455591				

Note: 1. Additional put-ups available.

### TYPICAL SPECIFICATION:

Conduit shall be Anaconda Type RWS. Conduit shall provide flexible raceway for wiring and shall be constructed of continuously interlocked hot dipped zinc galvanized steel. Conduit shall be UL listed in electrical trade sizes 3/8" thru 4".