

# EMT/Rigid Clampbacks

## Malleable Iron

### Features

- Extensive size range for multiple specifications

### Applications

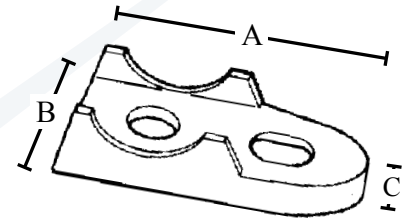
- Indoor or outdoor use
- Use to provide spacing between mounting surface and EMT and Rigid conduit

### Standard Material

- Malleable iron

### Standard Finish

- Zinc plated



| Catalog Number | UPC   | Size          | Unit Carton | Ship Case | Weight/Case | A     | Inches B | C    |
|----------------|-------|---------------|-------------|-----------|-------------|-------|----------|------|
| <b>481</b>     | 14510 | <b>1/2"</b>   | 25          | 250       | 16          | 2.06  | 1.00     | .50  |
| <b>482</b>     | 14520 | <b>3/4"</b>   | 25          | 250       | 22          | 2.38  | 1.06     | .50  |
| <b>483</b>     | 14530 | <b>1"</b>     | 25          | 250       | 35          | 2.94  | 1.25     | .56  |
| <b>484</b>     | 14540 | <b>1-1/4"</b> | 10          | 100       | 21          | 3.50  | 1.88     | .75  |
| <b>485</b>     | 14550 | <b>1-1/2"</b> | 10          | 100       | 27          | 3.81  | 1.44     | .81  |
| <b>486</b>     | 14560 | <b>2"</b>     | 5           | 50        | 22          | 4.75  | 1.94     | 1.00 |
| <b>487</b>     | 14570 | <b>2-1/2"</b> | ---         | 25        | 14          | 5.75  | 2.44     | .75  |
| <b>488</b>     | 14580 | <b>3"</b>     | ---         | 10        | 9           | 6.69  | 2.63     | .88  |
| <b>489</b>     | 14590 | <b>3-1/2"</b> | ---         | 10        | 14          | 7.13  | 2.88     | 1.06 |
| <b>489A</b>    | 14600 | <b>4"</b>     | ---         | 10        | 18          | 8.88  | 3.06     | 1.06 |
| <b>489B</b>    | 14601 | <b>5"</b>     | ---         | 10        | 25          | 10.13 | 3.75     | .60  |
| <b>489C</b>    | 14602 | <b>6"</b>     | ---         | 10        | 30          | 12.19 | 4.00     | .75  |