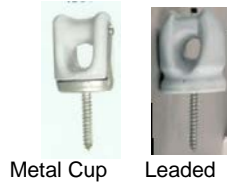


**HEAVY & MEDIUM DUTY WIREHOLDERS**

Catalog No.	UPC #	Description	Std. Pkg	Wgt/100
131	05003	2 1/4" Lg. Lag Screw Leaded	50	63
132	05000	2 1/4" Lg. Lag Screw Attached w/Cup	50	68
133	05001	3" Lg. Lag Screw Attached w/Cup	50	68
134	05002	4" Lg. Lag Screw Attached w/Cup	25	75



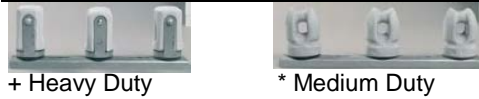
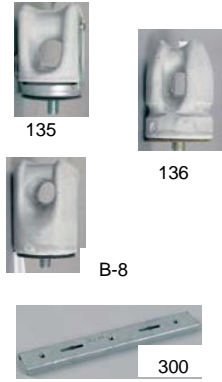
**LIGHT DUTY WIREHOLDERS**

Catalog No.	UPC #	Description	Std. Pkg	Wgt/100
B-9	05004	1 11/16" Lg. Lag Screw Leaded	100	25



**HOUSE BRACKETS & INSULATORS**

Catalog No.	UPC #	Description	Std. Pkg	Wgt/100
135	05005	3/8 x 3/8 Machine Stud Attached w/Cup	50	65
136	05006	3/8 x 3/8 Machine Stud Leaded	50	60
B-8	00201	1/4 x 1/4 Machine Stud Leaded	50	72
300	05050	3/8" Tap House Strap 4 1/2" Centers	10	64
302+	05051	# 300 with 2 No. 135 Wireholders	10	200
303+	05052	# 300 with 3 No. 135 Wireholders	10	250
304*	05053	# 300 with 2 No. 136 Wireholders	10	225
305*	05054	# 300 with 3 No. 136 Wireholders	10	300



**MEDIUM DUTY SECONDARY RACKS \*INCLUDING B-355 SPOOL INSULATORS**

Catalog No.	UPC #	No. Insulators	Center Spacing	Std. Pkg	Wgt/100
B32	05110	2	8"      18"	5	570
B33	05111	3	4"      18"	5	691
B34	05112	3	8"      25"	5	911
B35	05113	5	4"      25"	5	1158
B38	05114	4	8"      34"	5	1232

**SPOOLS**

Catalog No.	UPC #	Description	Std. Pkg	Wgt/100
B-5	05010	2 1/4" Diameter Porcelain Spool	50	43
B-355	05011	3" Diameter Porcelain Spool	50	124

**INSULATED SECONDARY & DEADEND CLEAVES - HOT DIP GALVANIZED - INCLUDING SPOOL INSULATORS**

Catalog No.	UPC #	Extension	Mounting	Steel Size	Std. Pkg	Wgt/100
MWK1300		4"	11/16 x 13/16	4 3/4" x No. 11	10	220
MWK4111	00884	4"	11/16 Sqr	1/8 x 1/2 x 1	10	140
MWK4112	00524	4"	11/16 x 7/8	3/16 x 3	10	254
MWK4114		3 1/2"	11/16 x 7/8	3/16 x 3	10	248



**INSULATED CROSSARM CLEAVES - HOT DIP GALVANIZED - INCLUDING SPOOL INSULATORS**

Catalog No.	UPC #	Extension	Mounting	Steel Size	Std. Pkg	Wgt/100
MW4172		4 3/16"	11/16 x 13/16	1 1/2" X 3/16"	10	118
MWK4113	00885	5"	11/16 x 13/16	1 1/2" X 3/16"	10	160
MWK4115		5 3/4"	11/16 x 25/32	1/4" x 1 1/2"	10	244



**INSULATED SWINGING CLEVISES - HOT DIP GALVANIZED - INCLUDING SPOOL INSULATORS**



Catalog No.	UPC #	Extension	Mounting	Steel Size	Std. Pkg	Wgt/100
MW4171		5"	5/8 eyebolt	1 1/2" X 3/16"	10	160
MW4170		6 7/16"	1 1/16"	3/4" X 3/16"	10	95

**LAG SCREWS - HOT DIP GALVANIZED**



Catalog No.	UPC #	Size (Inches)	Minimum Thread Length (Inches)	Drive/Point	Std. Pkg	Wgt/100
LS050		1/2 x 4	1/2"	Fetter/Reg	250	23
LS050P		1/2 x 4	1/2"	Fetter/Pilot	250	23
LS050TP		1/2 x 4	1/2"	Twist/Pilot	250	23
LS050-1		1/2 x 4 -1/2	1/2"	Fetter/Reg	250	23
LS050-1P		1/2 x 4 -1/2	1/2"	Fetter/Pilot	250	23

**MACHINE BOLTS with NUT- HOT DIP GALVANIZED - ROLLED THREADS**

**Min. Tensile Strength**  
 3/8" 4,250 lbs  
 1/2" 7,800 lbs  
 5/8" 12,400 lbs  
 3/4" 18,350 lbs  
 7/8" 25,400 lbs



Catalog No.	UPC #	Description	Std. Pkg	Wgt/100
MW3804.5		3/8" x 4 1/2" Machine Bolt	250	17
MW3805		3/8" x 5" Machine Bolt	250	19
MW5006		1/2" x 6" Machine Bolt	100	40
MW5008		1/2" x 8" Machine Bolt	100	52
MW5010		1/2" x 10" Machine Bolt	100	61
MW5012		1/2" x 12" Machine Bolt	100	70
MW5014		1/2" x 14" Machine Bolt	50	79
MW5016		1/2" x 16" Machine Bolt	50	91
MW5806	00865	5/8" x 6" Machine Bolt	100	68
MW5808	00866	5/8" x 8" Machine Bolt	50	82
MW5809	00867	5/8" x 9" Machine Bolt	50	90
MW5810	00868	5/8" x 10" Machine Bolt	50	98
MW5812	00869	5/8" x 12" Machine Bolt	50	112
MW5814	00870	5/8" x 14" Machine Bolt	50	128
MW5816	00871	5/8" x 16" Machine Bolt	50	146
MW5818	00872	5/8" x 18" Machine Bolt	50	162
MW5820	00873	5/8" x 20" Machine Bolt	40	170
MW5822		5/8" x 22" Machine Bolt	25	180
MW5824		5/8" x 24" Machine Bolt	25	220
MW5826		5/8" x 26" Machine Bolt	25	224
MW7506	00874	3/4" x 6" Machine Bolt	50	99
MW7508	00875	3/4" x 8" Machine Bolt	50	124
MW7510	00876	3/4" x 10" Machine Bolt	25	146
MW7512	00877	3/4" x 12" Machine Bolt	25	170
MW7514	00878	3/4" x 14" Machine Bolt	25	184
MW7516	00879	3/4" x 16" Machine Bolt	25	212
MW7518	00880	3/4" x 18" Machine Bolt	25	240
MW7520		3/4" x 20" Machine Bolt	25	262
MW7522		3/4" x 22" Machine Bolt	20	288
MW7524		3/4" x 24" Machine Bolt	20	296
MW7526		3/4" x 26" Machine Bolt	20	316
MW7812		7/8" x 12" Machine Bolt	25	240
MW7814		7/8" x 14" Machine Bolt	25	264
MW7816		7/8" x 16" Machine Bolt	25	288
MW7818		7/8" x 18" Machine Bolt	25	320
MW7820		7/8" x 20" Machine Bolt	20	345
MW7822		7/8" x 22" Machine Bolt	20	380
MW7824		7/8" x 24" Machine Bolt	20	430

**FORGED OVAL EYE BOLTS with NUT - HOT DIP GALVANIZED - ROLLED THREADS**



**Min. Tensile Strength**  
 5/8" 13,550 lbs  
 3/4" 18,350 lbs

Catalog No.	UPC #	Description	Std. Pkg	Wgt/100
MW9408	00855	5/8" x 8" Oval Eye Bolt	50	132
MW9410	00856	5/8" x 10" Oval Eye Bolt	50	146
MW9412	00857	5/8" x 12" Oval Eye Bolt	50	160
MW9414	00858	5/8" x 14" Oval Eye Bolt	25	176
MW9416	00859	5/8" x 16" Oval Eye Bolt	25	188
MW9418		5/8" x 18" Oval Eye Bolt	20	202
MW9420		5/8" x 20" Oval Eye Bolt	20	210
MW9508	00860	3/4" x 8" Oval Eye Bolt	25	192
MW9510	00861	3/4" x 10" Oval Eye Bolt	25	208
MW9512	00862	3/4" x 12" Oval Eye Bolt	25	224
MW9514	00863	3/4" x 14" Oval Eye Bolt	25	248
MW9516	00864	3/4" x 16" Oval Eye Bolt	25	268
MW9518		3/4" x 18" Oval Eye Bolt	20	280
MW9520		3/4" x 20" Oval Eye Bolt	20	302

**FORGED OVAL EYENUTS - HOT DIP GALVANIZED**



Catalog No.	UPC #	Bolt Diameter	Std. Pkg	Wgt/100
MW1075		5/8"	50	92
MW1076		3/4"	50	92

**THIMBLE EYENUTS - HOT DIP GALVANIZED**



Catalog No.	UPC #	Bolt Diameter	Max Strand Size	Std. Pkg	Wgt/100
MW6510		5/8"	1/2"	50	92
MW6511		3/4"	1/2"	50	92

**STANDARD EYELETS - HOT DIP GALVANIZED**



Catalog No.	UPC #	Bolt Diameter	Slot Size	Std. Pkg	Wgt/100
MW1070		5/8"	Forged Oval Eyenut	50	92
MW1071		3/4"	Forged Oval Eyenut	50	92

**STRAIGHT THIMBLE EYELETS - HOT DIP GALVANIZED**



Catalog No.	UPC #	Bolt Diameter	Max Strand Size	Std. Pkg	Wgt/100
MW6550C		5/8"	5/8	50	92

**ANGLE THIMBLE EYELETS - HOT DIP GALVANIZED**



Catalog No.	UPC #	Bolt Diameter	Max Strand Size	Std. Pkg	Wgt/100
MW6500		5/8"	1/2	50	97

**EXPANDING ANCHOR - HOT DIP GALVANIZED**



CLOSED

EXPANDED

Catalog No.	UPC #	Area (Sq. Inch)	Rod Size Inch	Std. Pkg	Wgt/100
MW7678		135	5/8 or 3/4	1	1000

**DOUBLE ARMING BOLTS with NUTS- HOT DIP GALVANIZED - ROLLED THREADS**



**Min. Tensile Strength**  
 5/8" 12,400 lbs  
 3/4" 18,350 lbs  
 7/8" 25,400 lbs

Catalog No.	UPC #	Description	Std. Pkg	Wgt/100
DA5810		5/8" x 10" Double Arming Bolt	50	130
DA5812		5/8" x 12" Double Arming Bolt	50	136
DA5814		5/8" x 14" Double Arming Bolt	50	154
DA5816		5/8" x 16" Double Arming Bolt	25	176
DA5818		5/8" x 18" Double Arming Bolt	25	192
DA5820		5/8" x 20" Double Arming Bolt	25	204
DA5822		5/8" x 22" Double Arming Bolt	25	223
DA5824		5/8" x 24" Double Arming Bolt	25	232
DA5826		5/8" x 26" Double Arming Bolt	25	240
DA5828		5/8" x 28" Double Arming Bolt	20	256
DA5830		5/8" x 30" Double Arming Bolt	20	265
DA7512		3/4" x 12" Double Arming Bolt	25	206
DA7514		3/4" x 14" Double Arming Bolt	25	228
DA7516		3/4" x 16" Double Arming Bolt	25	244
DA7518		3/4" x 18" Double Arming Bolt	25	268
DA7520		3/4" x 20" Double Arming Bolt	25	280
DA7522		3/4" x 22" Double Arming Bolt	20	308
DA7524		3/4" x 24" Double Arming Bolt	25	336
DA7526		3/4" x 26" Double Arming Bolt	25	345
DA7528		3/4" x 28" Double Arming Bolt	20	365
DA7530		3/4" x 30" Double Arming Bolt	20	385
DA7812		7/8" x 12" Double Arming Bolt	20	283
DA7814		7/8" x 14" Double Arming Bolt	20	312
DA7816		7/8" x 16" Double Arming Bolt	20	341
DA7818		7/8" x 18" Double Arming Bolt	15	370
DA7820		7/8" x 20" Double Arming Bolt	15	398
DA7822		7/8" x 22" Double Arming Bolt	15	427
DA7824		7/8" x 24" Double Arming Bolt	15	456
DA7826		7/8" x 26" Double Arming Bolt	10	485
DA7828		7/8" x 28" Double Arming Bolt	10	514
DA7830		7/8" x 30" Double Arming Bolt	10	543
DA7832		7/8" x 32" Double Arming Bolt	10	572

**CARRIAGE BOLTS with NUT- HOT DIP GALVANIZED - ROLLED THREADS**



**Min. Tensile Strength**  
 3/8" 4,250 lbs  
 1/2" 7,800 lbs

Catalog No.	UPC #	Description	Thread Length (inches)	Std. Pkg	Wgt/100
CB384		3/8" x 4" Carriage Bolt	3	250	16
CB384-1/2		3/8" x 4 1/2" Carriage Bolt	3	250	17
CB385		3/8" x 5" Carriage Bolt	3	250	20
CB386		3/8" x 6" Carriage Bolt	3	250	20
CB388		3/8" x 8" Carriage Bolt	3	250	24
CB504-1/2		1/2" x 4 1/2" Carriage Bolt	3	200	32
CB505		1/2" x 5" Carriage Bolt	3	200	34
CB506		1/2" x 6" Carriage Bolt	3	200	41

**DRIVE HOOK - HOT DIP GALVANIZED**



Catalog No.	UPC #	Description	Std. Pkg	Wgt/100
MW1020	00514	7/16" x 4 3/4" Fetter Drive, Pilot Point	10	26

**FORGED THIMBLE EYEBOLTS - HOT DIP GALVANIZED - ROLLED THREADS**

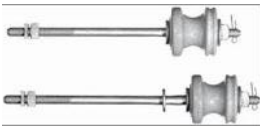
Catalog No.	UPC #	Description	Thread	Std. Pkg	Wgt/100
			Length (inches)		
TE5808		5/8" x 8" Straight Thimble Eyebolt	4	50	124
TE5810		5/8" x 10" Straight Thimble Eyebolt	4	50	142
TE5812		5/8" x 12" Straight Thimble Eyebolt	6	50	160
TE5814		5/8" x 14" Straight Thimble Eyebolt	6	50	172
TE5808A		5/8" x 8" Angle Thimble Eyebolt	4	50	130
TE5810A		5/8" x 10" Angle Thimble Eyebolt	4	50	144
TE5812A		5/8" x 12" Angle Thimble Eyebolt	6	50	162
TE5814A		5/8" x 14" Angle Thimble Eyebolt	6	50	184
TE7510		3/4" x 10" Straight Thimble Eyebolt	4	25	148
TE7512		3/4" x 12" Straight Thimble Eyebolt	6	25	176
TE7514		3/4" x 14" Straight Thimble Eyebolt	6	25	188
TE7510A		3/4" x 10" Angle Thimble Eyebolt	4	25	148
TE7512A		3/4" x 12" Angle Thimble Eyebolt	6	25	176
TE7514A		3/4" x 14" Angle Thimble Eyebolt	6	25	188



**Min. Tensile Strength**  
 5/8"      13,550 lbs  
 3/4"      18,350 lbs

**SPOOL BOLTS - HOT DIP GALVANIZED - ROLLED THREADS - INSULATORS ARE NOT INCLUDED**

Catalog No.	UPC #	Upset	Shank Length (inches)	Overall Length (inches)	Thread Length (inches)	Std. Pkg	Wgt/100
MW2343		5/8" Single	9	13 1/2	4	50	124
MW2344		5/8" Single	10	14 1/2	4	50	142
MW2346		5/8" Single	12	16 1/2	6	50	160
MW2348		5/8" Single	14	18 1/2	8	50	172
MW2394		5/8" Double	8	14	4	50	130
MW2396		5/8" Double	10	16	4	25	176
MW2398		5/8" Double	12	18	6	25	188



**Min. Tensile Strength**  
 5/8"      13,550 lbs

Spool bolts are furnished complete with two square nuts, locknut and cotter pin.

**FLAT SQUARE WASHER - HOT DIP GALVANIZED**

Catalog No.	UPC #	Size (inches)	Thickness (inches)	Hole Diameter (inches)	Bolt Diameter (inches)	Std. Pkg	Wgt/100
SW50		2 x 2	1/8	9/16	1/2	10	15
SW58-2		2 x 2	1/8	11/16	5/8	10	14
SW58		2 1/4 x 2 1/4	3/16	11/16	5/8	10	26
SW75		2 1/4 x 2 1/4	3/16	13/16	3/4	10	25
SW78-3		3 x 3	1/4	15/16	7/8	10	64
SW78-4		4 x 4	1/4	15/16	7/8	10	114
SW58-4		4 x 4	1/4	11/16	5/8	10	113



**CURVED SQUARE WASHER - HOT DIP GALVANIZED**

Catalog No.	UPC #	Size (inches)	Thickness (inches)	Hole Diameter (inches)	Bolt Diameter (inches)	Std. Pkg	Wgt/100
CSW58-3		3 x 3	1/4	11/16	5/8	10	65
CSW58-4		4 x 4	1/4	11/16	5/8	10	113
CSW58-25		2 1/4 x 2 1/4	3/16	11/16	5/8	10	26
CSW58-50		2 1/4 x 2 1/2	3/16	11/16	5/8	10	31
CSW55-3		3 x 3	1/4	13/16	5/5	10	65
CSW78-4		4 x 4	1/4	15/16	7/8	10	65



**ROUND FLAT WASHER - HOT DIP GALVANIZED**



Catalog No.	UPC #	Size (inches)	Thickness(inches)	Hole Diameter (inches)	Bolt Diameter (inches)	Std. Pkg	Wgt/100
RFW38		1	3/32	9/16	3/8	50	1.6
RFW50		1 3/8	1/8	9/16	1/2	50	4.4
RFW58		1 3/4	1/8	11/16	5/8	50	7.5
RFW75		2	1/8	13/16	3/4	50	9.1

**SQUARE NUTS - HOT DIP GALVANIZED**



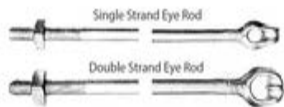
Catalog No.	UPC #	Nominal Size & Threads per Inch	Std. Pkg	Wgt/100
SN50		1/2-11 Square Nut	10	8
SN58		5/8-11 Square Nut	10	10.2
SN75		3/4-10 Square Nut	10	14.2
SN78		7/8-10 Square Nut	10	24

**MF TYPE LOCK NUTS - HOT DIP GALVANIZED**



Catalog No.	UPC #	Nominal Size & Threads per Inch	Std. Pkg	Wgt/100
MFLN50		1/2-11 MF Type Lock Nut	10	3
MFLN58		5/8-11 MF Type Lock Nut	10	4.2
MFLN75		3/4-10 MF Type Lock Nut	10	5.4
MFLN78		7/8-10 MF Type Lock Nut	10	8

**FORGED ANCHOR RODS - HOT DIP GALVANIZED**



Catalog No.	UPC #	Description	Min. Ultimate Strength (lbs)	Std. Pkg	Wgt/100
MW7656		5/8" x 6' Thimbleye Anchor	16,000	10	640
MW7657		5/8" x 7' Thimbleye Anchor	16,000	10	750
MW7658		5/8" x 8' Thimbleye Anchor	16,000	5	800
MW7666		3/4" x 6' Thimbleye Anchor	23,000	10	980
MW7667		3/4" x 7' Thimbleye Anchor	23,000	10	1100
MW7668		3/4" x 8' Thimbleye Anchor	23,000	5	1216
MW7616		5/8" x 6' Twineye Anchor	16,000	10	650
MW7617		5/8" x 7' Twineye Anchor	16,000	10	800
MW7618		5/8" x 8' Twineye Anchor	16,000	5	840
MW7626		3/4" x 6' Twineye Anchor	23,000	10	1012
MW7627		3/4" x 7' Twineye Anchor	23,000	10	1120
MW7628		3/4" x 8' Twineye Anchor	23,000	5	1300

**NO WRENCH SCREW ANCHOR**



Catalog No.	UPC #	Description	Std. Pkg	Wgt/EA
SA7554		3/4" X 54" No-Wrench Screw Anchor 4" Helix	1	9
SA7566		3/4" X 66" No-Wrench Screw Anchor 6" Helix	1	12

**GUY CLAMPS with BOLTS INSTALLED - HOT DIP GALVANIZED**



Catalog No.	UPC #	No. of Bolts & Diameter	Clamp		Strand Diameter inches	Std. Pkg	Wgt/100
			Dimension inches	Clamp			
MW8640		2 - 1/2"	3 3/8"	1 9/16	3/16-3/8	50	132
MW8645		3 - 1/2"	4"	1 9/16	3/16-7/16	50	162
MW8650		3 - 1/2"	6"	1 9/16	3/16-7/16	25	227
MW8655*		3 - 5/8"	6"	1 21/32	5/16-1/2	25	268

Guy clamps have straight parallel grooves which will not damage conductor strand.

\*Meets Bell Telephone requirement of 18,000 lb. Minimum breaking strength for track bolts.

**CABLE SUSPENSION CLAMPS - HOT DIP GALVANIZED**



Catalog No.	UPC #	No. of Bolts & Diameter	Clamp Length (inches)	Mounting Slot Dia. (inches)	Strand Diameter (inches)	Std. Pkg	Wgt/100

**CROSSARM BRACES - HOT DIPPED GALVANIZED**



Catalog No.	UPC #	Size	Length (inches)	Hole Distance (inches)	Std. Pkg	Wgt/100
MW9030		1 1/4 x 1/4	30	28	10	245

Crossarm braces are used in pairs for aligning and supporting crossarms.

**GUY ATTACHMENT - HOT DIPPED GALVANIZED**



Catalog No.	UPC #	Steel Size	Hole Diameter (inches)	Std. Pkg	Wgt/100

**LOW VOLTAGE FORGED STEEL PINS - HOT DIP GALVANIZED**



Catalog No.	UPC #	Shank Diameter (inches)	Height Above Arm (inches)	Shank Length (inches)	Thread Length (inches)	Std. Pkg	Wgt/100
SP103		5/8	5"	5 3/4"	2 3/4	25	180
SP104		5/8	5"	6 1/2"	3	25	190
SP105		5/8	6"	5 3/4"	2 3/4	25	196
SP106		5/8	6"	6 1/2"	3	25	204
<b>SHORT SHANK</b>							
SP100		5/8	5"	1 1/2"	1 1/4	50	130
SP101		5/8	6"	1 1/2"	1 1/4	50	132
SP102		5/8	6"	1 3/4"	1 1/2	25	200



**HIGH VOLTAGE FORGED STEEL PINS - HOT DIP GALVANIZED**



Catalog No.	UPC #	Shank Diameter (inches)	Height Above Arm (inches)	Std. Pkg	Wgt/100
-------------	-------	-------------------------	---------------------------	----------	---------

For insulators with standard 1" threaded Pin Hole.

**LONG SHANK**

SP203		5/8	6"	20	240
SP204		3/4	6"	20	292

**SHORT SHANK**

SP202		3/4	7"	20	210
-------	--	-----	----	----	-----

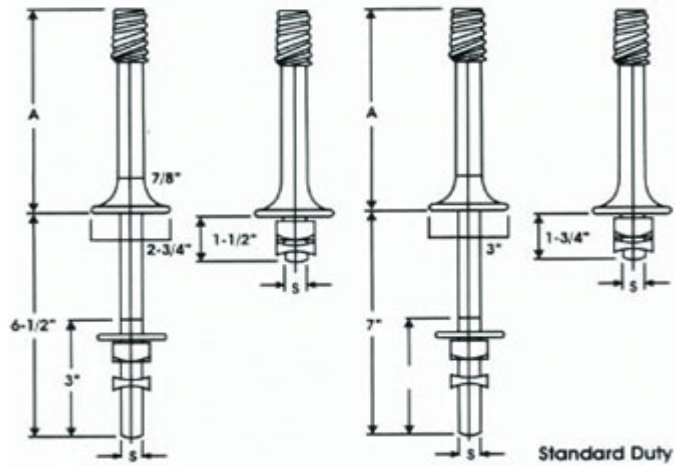
For insulators with standard 1 3/8" threaded Pin Hole.

**STANDARD LONG SHANK**

SP303		5/8	7"	20	240
SP404		3/4	8"	20	292

**STANDARD SHORT SHANK**

SP402		3/4	8"	20	210
-------	--	-----	----	----	-----



**POLE TOP PINS - HOT DIP GALVANIZED**



Catalog No.	Length (inches)	Diameter (inches)			Thread Diameter (inches)	Std. Pkg	Wgt/100
		A	B	C			
<b>PRESSED STEEL</b>							
PTP15	15	5	(2-Hole)	9	1	25	280
PTP18	18	5	3	9	1	15	336
PTP20	20	8	2	11	1	15	488
PTP24	24	5	3	15	1	10	615
PTP20-2	20	8	(2-Hole)	11	1 3/8	15	535

